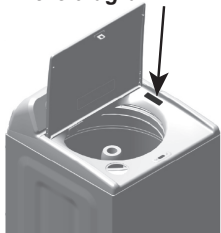


QUICK START GUIDE WHIRLPOOL® TOP LOADING WASHING MACHINE

PRODUCT REGISTRATION & OWNER INFORMATION

Find your QR code on your product's serial tag, as shown in the diagram.



YOUR QR CODE UNLOCKS... product registration and warranty information, installation instructions, how-to videos, and additional accessories to get the most out of your product. If you purchased a smart appliance, your QR code will provide instructions on how to download the app and connect. You can access the full Installation, User Maintenance and Operating Instructions, Warranty details, and more by visiting our website at <https://www.whirlpool.com/owners> or <https://www.whirlpool.ca/owners>. This may save you the cost of a service call. To receive a free printed copy of the information online, call us at 1-866-696-2538 (U.S.A.) /1-800-807-6777 (Canada) or write to us at:

Whirlpool Brand Appliances
Customer eXperience Center
533 Benson Road
Benton Harbor, MI 49022-2692

Whirlpool Brand Appliances
Customer eXperience Center Unit
200-6750 Century Ave.
Mississauga, Ontario L5N 0B7

Register to access warranty information and receive important notifications related to your product. Scan the Photo Registration Card or QR code to register your product.

WARNING: To reduce the risk of fire, electric shock, or injury to person, read the Important Safety Instructions located in the Safety and Installation Instructions provided before installing or operating this appliance.

OPERATING INSTRUCTIONS

⚠ WARNING



Fire Hazard

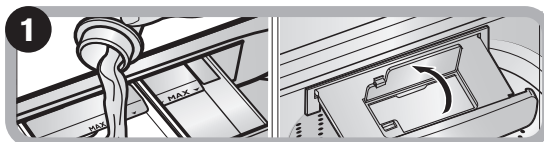
No washer can completely remove oil.

Do not dry anything that has ever had any type of oil on it (including cooking oils).

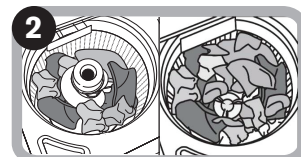
Items containing foam, rubber, or plastic must be dried on a clothesline or by using an Air Cycle.

Failure to follow these instructions can result in death or fire.

WARNING: Do not wash water resistant or water repellent type clothing. Failure to closely follow these instructions may result in an abnormal vibrating and out-of-balance condition that could result in physical injury, property damage and/or appliance damage.



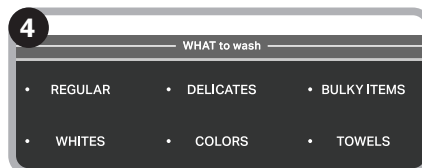
1 Add HE Detergent & Laundry Products to Dispenser then close the dispenser drawer.



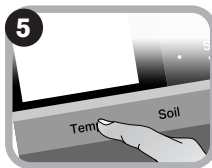
2 Sort & Load Laundry then close the lid.



3 Touch Power to Turn On the Washer.



4 Select the Desired Cycle for your Load.



5 Adjust Cycle Setting, if desired.



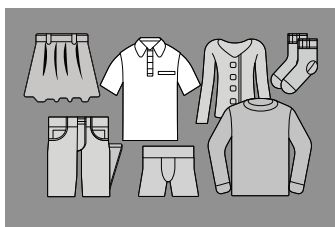
6 Select Additional Options.



7 Touch and Hold Start/ Pause to Begin Cycle.

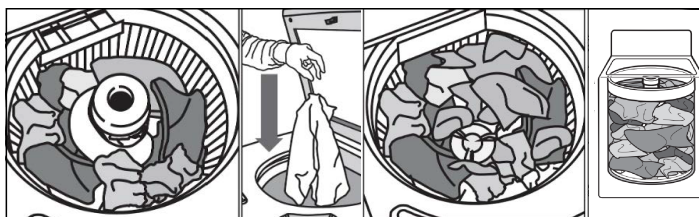
NOTE: Not all cycles, settings or options are available with all models.

CHOOSING THE RIGHT CYCLE



NOTE: Normal cycle with Warm water is recommended for cottons, linens and mixed garment loads.

LOADING RECOMMENDATIONS



For best performance, load items by dropping them in loose heaps evenly around the basket wall. Do not lay items lengthwise.